

PLAT
 PART OF THE
 W 1/2 SECTION 7, T18N, R11W
 OF THE 2nd P.M.
 VERMILION COUNTY, ILLINOIS

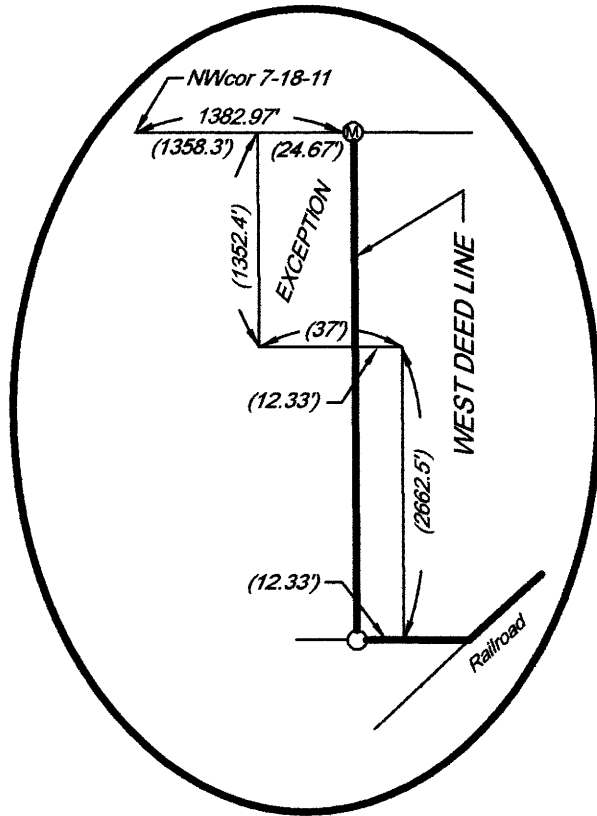


SCALE : 1" = 500'

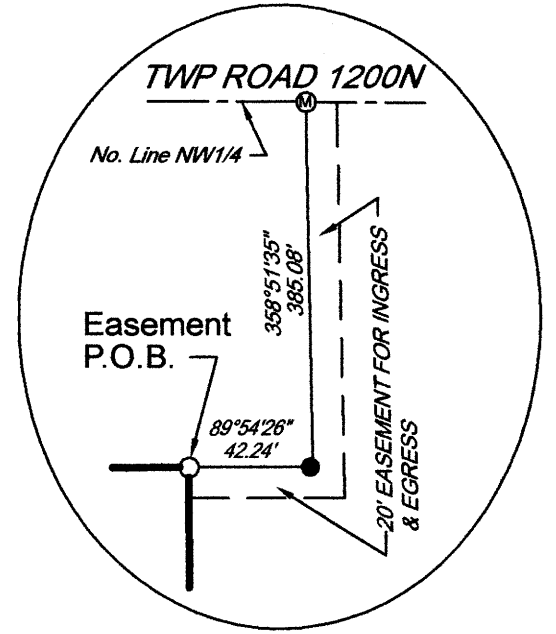
TOTAL AREA = 20.000 ACRES

LEGEND

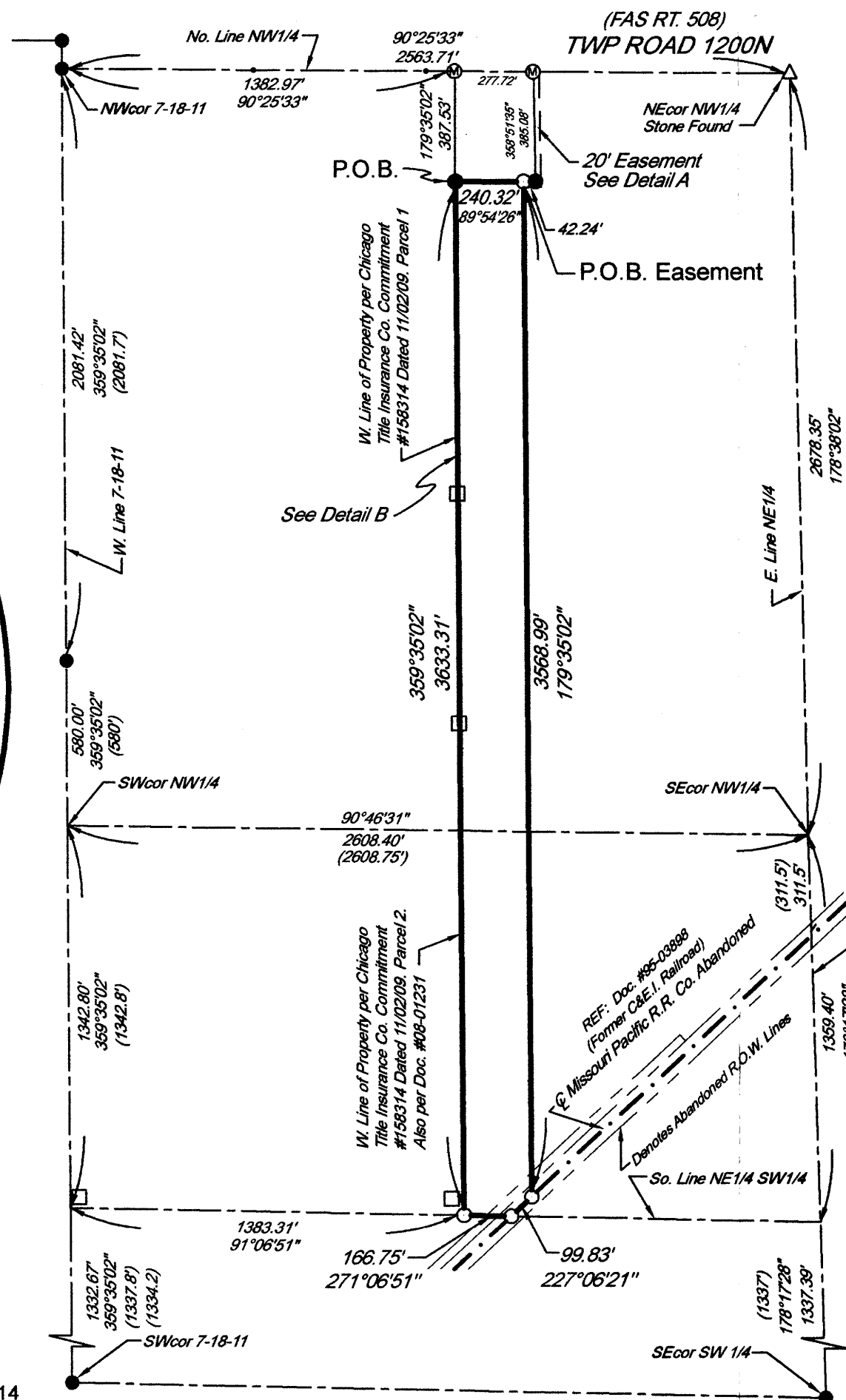
- 5/8" X 24" IRON ROD SET WITH L.S. 3106 IDENTIFICATION CAP
- IRON ROD OR PIPE FOUND
- FENCE POST
- (311.5) RECORD DISTANCE
- BOUNDARY OF SURVEY
- Ⓜ MAG NAIL FOUND



DETAIL B
NO SCALE



DETAIL A
NO SCALE



THIS WILL FURTHER STATE

That the above plat is a true and correct representation of said survey as made under my direction and supervision. Dimensions are shown in feet, tenths, and hundredths. This professional service conforms to the current Illinois minimum standards for a boundary survey.

Signed and dated in Chrisman, Illinois, this 14th day of January, 2013.



Scott W. Ross
 Illinois Professional Land Surveyor No. 3106

License Expires 11/30/14
 Field Work Completed 1/13

S.W. ROSS LAND SURVEYING
 SURVEYING & MAPPING
 222 N. ALABAMA ST.
 CHRISMAN, ILLINOIS
 (217) 269-2750