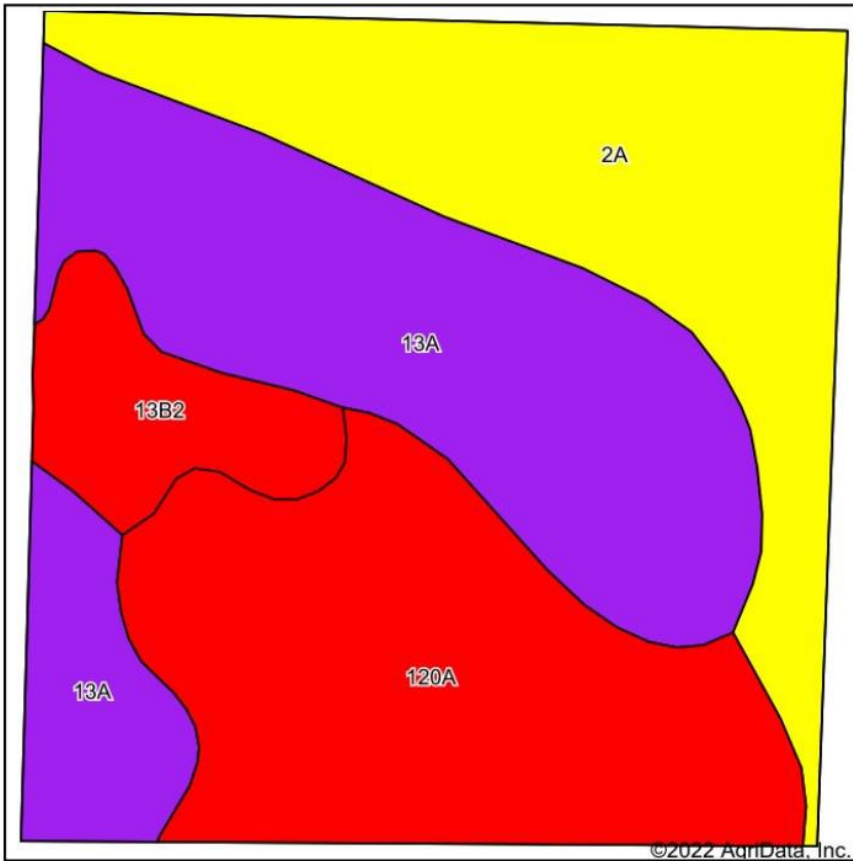
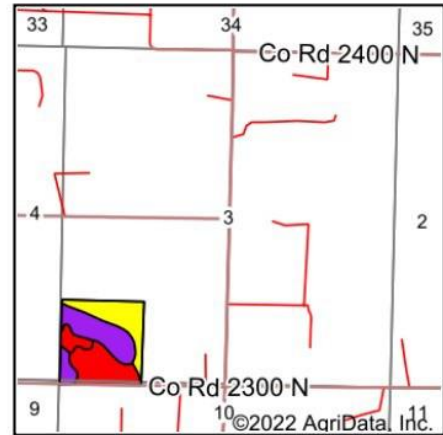


T3 Soils Map



Soils data provided by USDA and NRCS.

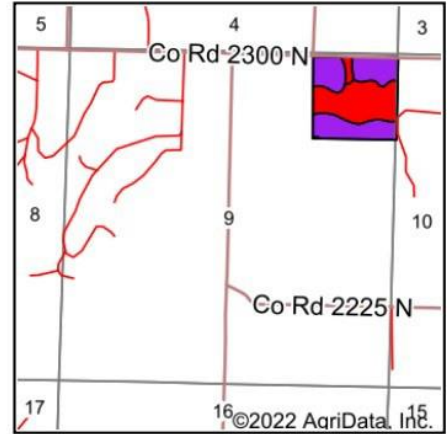
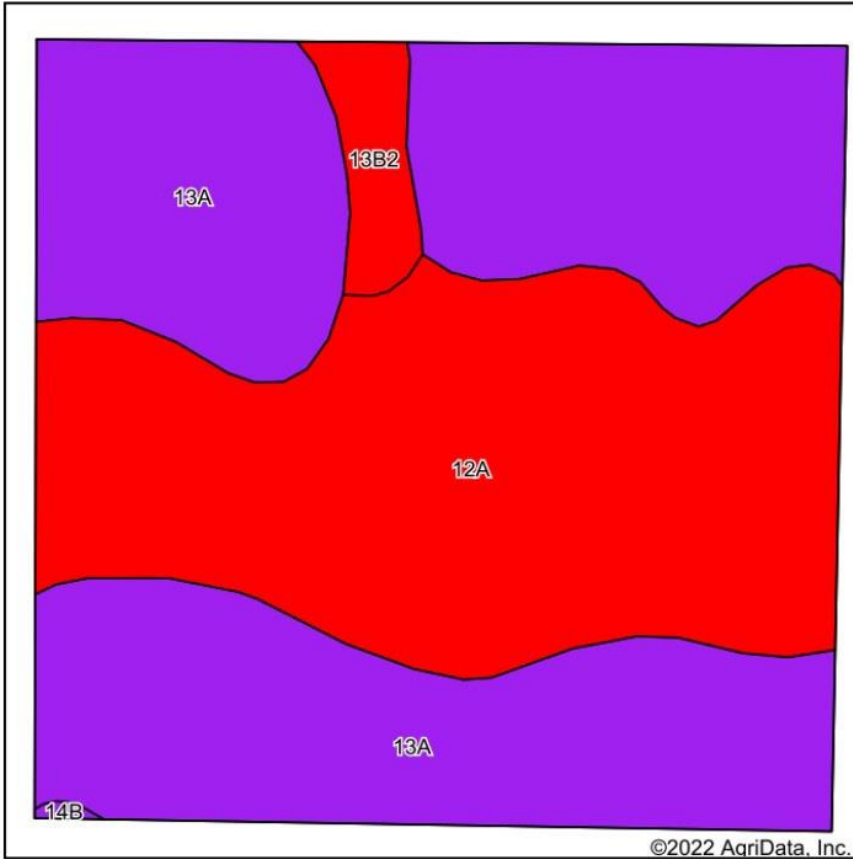


State: **Illinois**
 County: **Fayette**
 Location: **9-7N-3E**
 Township: **Avena**
 Acres: **40.06**
 Date: **6/8/2022**



Area Symbol: IL051, Soil Area Version: 17										
Code	Soil Description	Acres	Percent of field	Il. State Productivity Index Legend	Subsoil rooting <i>a</i>	Corn Bu/A	Soybeans Bu/A	Wheat Bu/A	Oats Bu/A <i>b</i>	Crop productivity index for optimum management
13A	Bluford silt loam, 0 to 2 percent slopes	14.11	35.2%		FAV	136	44	55	0	101
120A	Huey silt loam, 0 to 2 percent slopes	11.81	29.5%		UNF	109	43	43	0	89
2A	Cisne silt loam, 0 to 2 percent slopes	11.27	28.1%		FAV	149	46	59	0	109
**13B2	Bluford silt loam, 2 to 5 percent slopes, eroded	2.87	7.2%		FAV	**129	**42	**52	0	**96
Weighted Average						131.2	44.1	52.4	*-	99.4

T4 Soils Map



State: **Illinois**
 County: **Fayette**
 Location: **9-7N-3E**
 Township: **Avena**
 Acres: **40.04**
 Date: **6/8/2022**



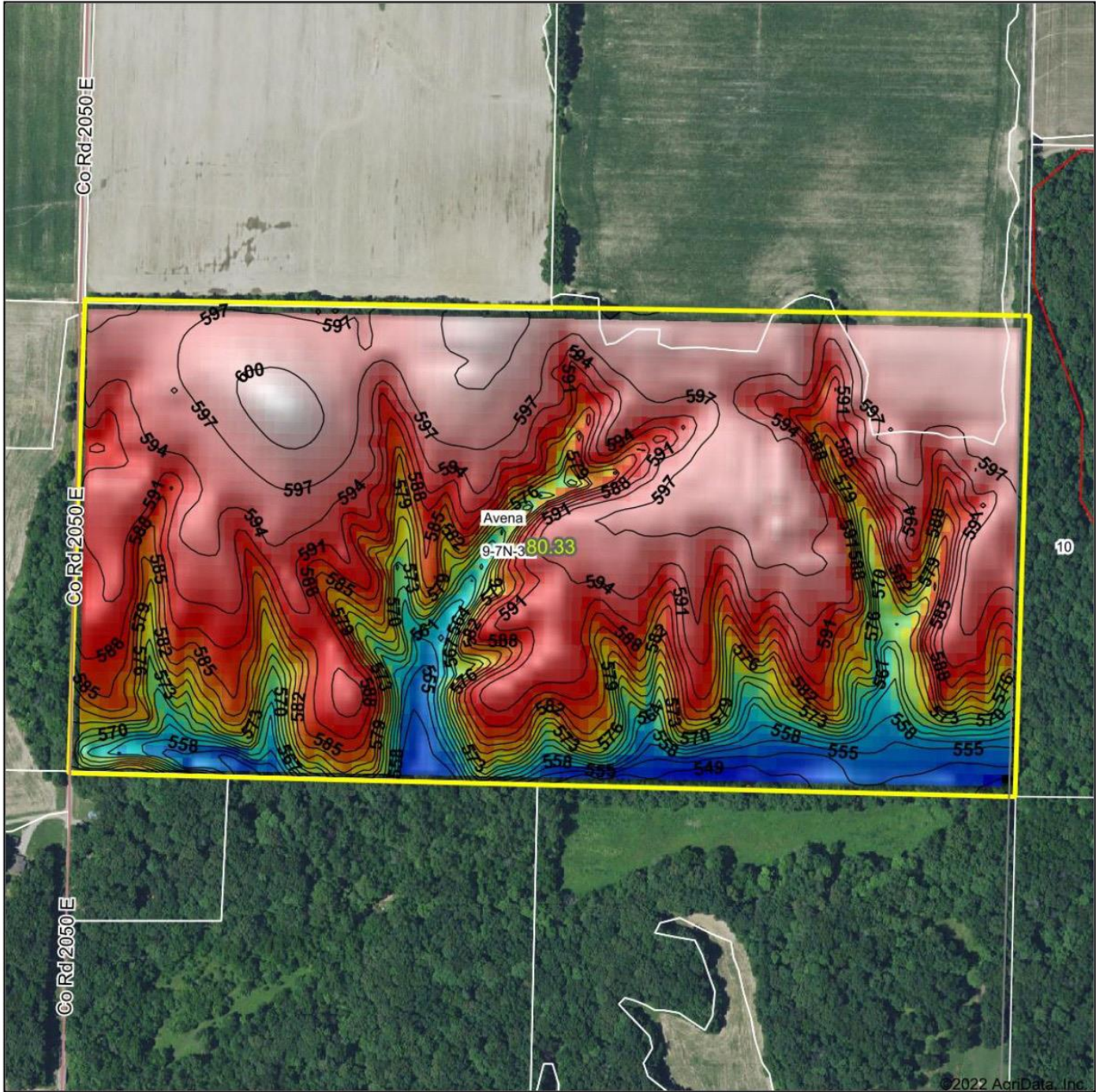
Soils data provided by USDA and NRCS.

©2022 AgriData, Inc.

Area Symbol: IL051, Soil Area Version: 17

Code	Soil Description	Acres	Percent of field	Il. State Productivity Index Legend	Subsoil rooting a	Corn Bu/A	Soybeans Bu/A	Wheat Bu/A	Oats Bu/A b	Crop productivity index for optimum management
13A	Bluford silt loam, 0 to 2 percent slopes	22.27	55.6%		FAV	136	44	55	0	101
12A	Wynoose silt loam, 0 to 2 percent slopes	16.59	41.4%		FAV	128	42	51	0	97
**13B2	Bluford silt loam, 2 to 5 percent slopes, eroded	1.18	2.9%		FAV	**129	**42	**52	0	**96
Weighted Average						132.5	43.1	53.3	*-	99.2

T5 TOPO MAP



Source: USGS 10 meter dem
Interval(ft): 3
Min: 546.0
Max: 602.8
Range: 56.8
Average: 586.1
Standard Deviation: 13.62 ft



6/8/2022

9-7N-3E
Fayette County
Illinois

map center: 39° 3' 57.28, -88° 51' 56.49

Ag Exchange
We know farms. We sell farms.

Maps Provided By
surety
CUSTOMIZED ONLINE MAPPING

© AgriData, Inc. 2021 www.AgriDataInc.com

Field borders provided by Farm Service Agency as of 5/21/2008.

