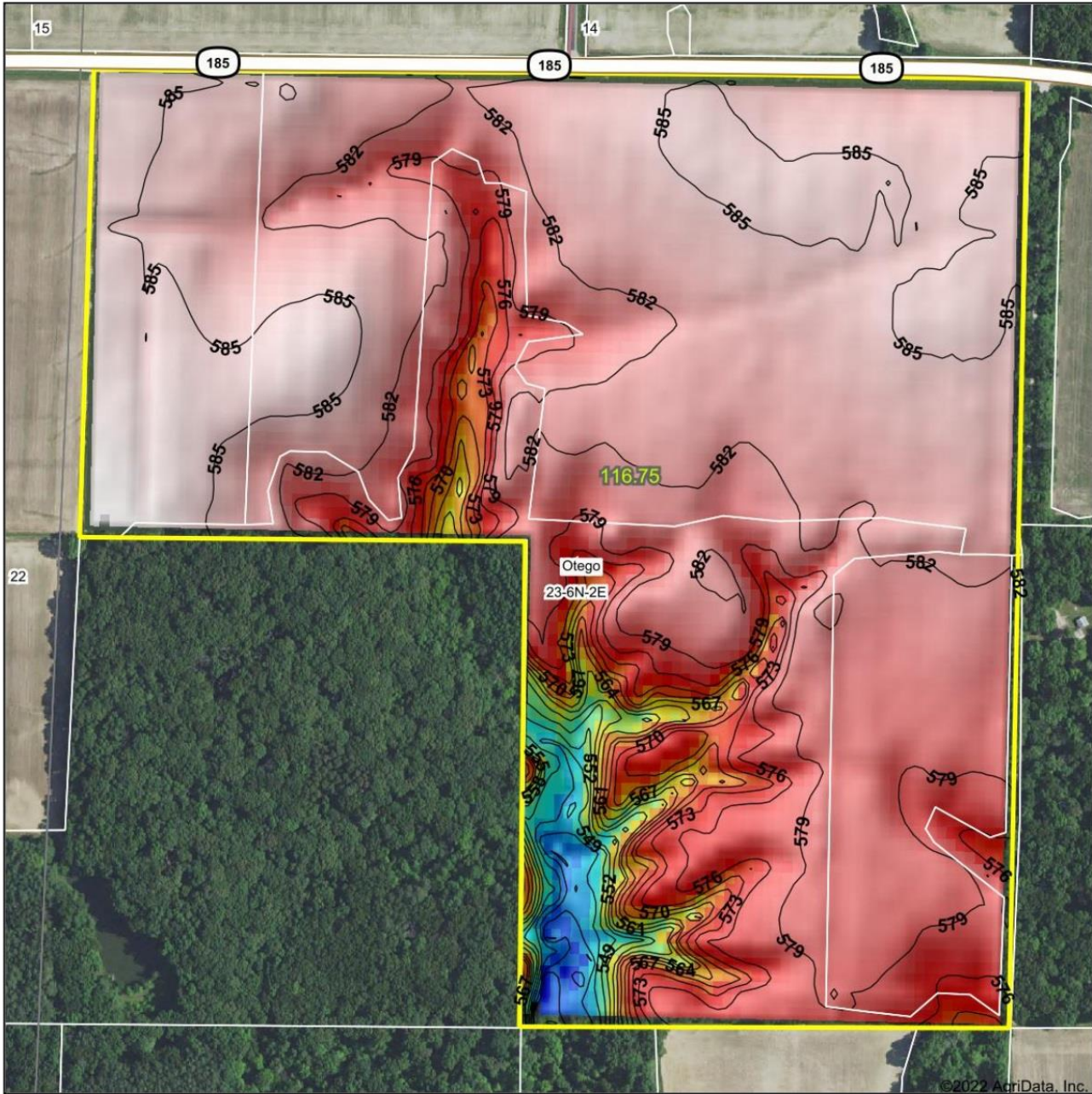
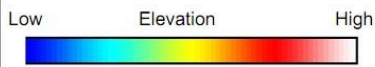




Topography Hillshade



©2022 AgriData, Inc.



Source: USGS 10 meter dem
Interval(ft): 3
Min: 537.0
Max: 587.3
Range: 50.3
Average: 579.7
Standard Deviation: 7.78 ft



23-6N-2E
Fayette County
Illinois

map center: 38° 57' 1.68, -88° 57' 7.23

Ag Exchange
We know farms. We sell farms.

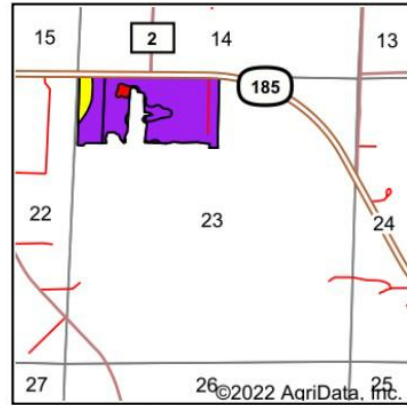
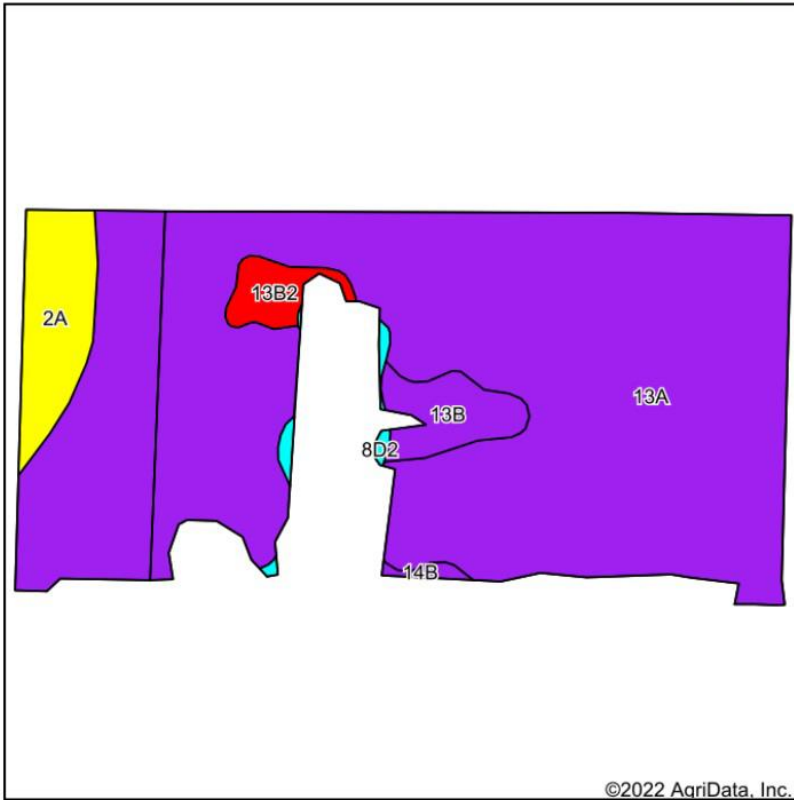
Maps Provided By:



© AgriData, Inc. 2021 www.AgriDataInc.com

Field borders provided by Farm Service Agency as of 5/21/2008.

T9 Soils Map



State: **Illinois**
 County: **Fayette**
 Location: **23-6N-2E**
 Township: **Otego**
 Acres: **65.03**
 Date: **6/22/2022**



Soils data provided by USDA and NRCS.

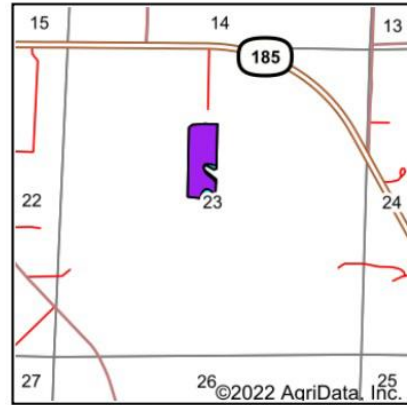
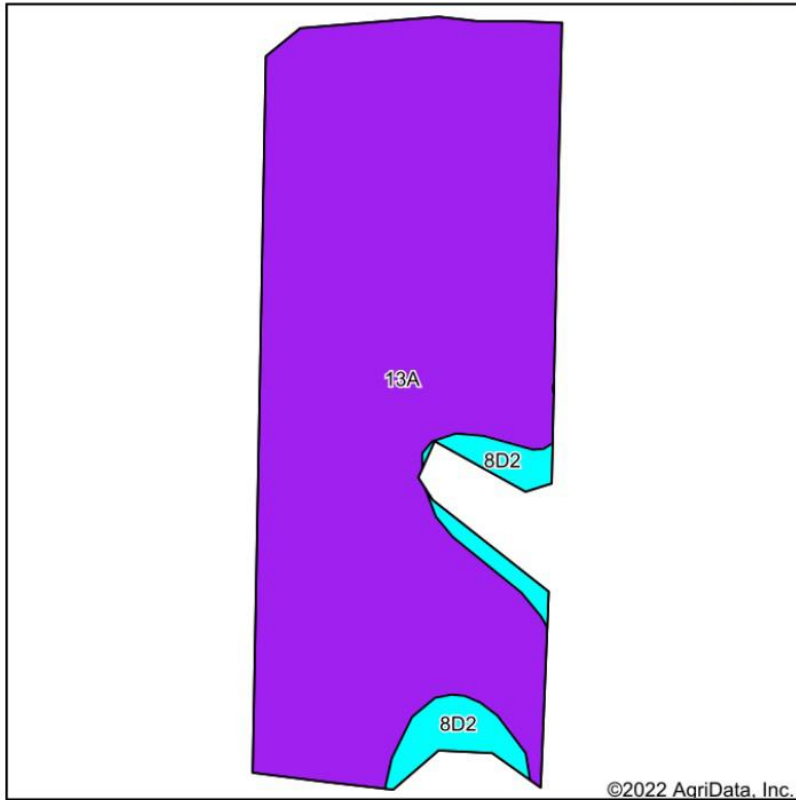
©2022 AgriData, Inc.

Area Symbol: IL051, Soil Area Version: 17

Code	Soil Description	Acres	Percent of field	Il. State Productivity Index Legend	Subsoil rooting ^a	Corn Bu/A	Soybeans Bu/A	Wheat Bu/A	Oats Bu/A ^b	Crop productivity index for optimum management
13A	Bluford silt loam, 0 to 2 percent slopes	56.82	87.4%		FAV	136	44	55	0	101
2A	Cisne silt loam, 0 to 2 percent slopes	3.87	6.0%		FAV	149	46	59	0	109
**13B	Bluford silt loam, 2 to 5 percent slopes	2.30	3.5%		FAV	**135	**44	**54	0	**100
**13B2	Bluford silt loam, 2 to 5 percent slopes, eroded	1.31	2.0%		FAV	**129	**42	**52	0	**96
**8D2	Hickory silt loam, 10 to 18 percent slopes, eroded	0.48	0.7%		FAV	**108	**36	**44	**50	**82
**14B	Ava silt loam, 2 to 5 percent slopes	0.25	0.4%		UNF	**134	**44	**54	0	**99
Weighted Average						136.4	44	55.1	0.4	101.2

Table: Optimum Crop Productivity Ratings for Illinois Soil by K.R. Olson and J.M. Lang, Office of Research, ACES, University of Illinois at Champaign-Urbana. Version: 1/2/2012 Amended Table S2 B811
 Crop yields and productivity indices for optimum management (B811) are maintained at the following NRES web site: <http://soilproductivity.nres.illinois.edu/>
^a UNF = unfavorable; FAV = favorable
^b Soils in the southern region were not rated for oats and are shown with a zero "0".

T10, tillable field Soils Map



State: **Illinois**
 County: **Fayette**
 Location: **23-6N-2E**
 Township: **Otego**
 Acres: **13.14**
 Date: **6/22/2022**



Soils data provided by USDA and NRCS.

Area Symbol: IL051, Soil Area Version: 17

Code	Soil Description	Acres	Percent of field	Il. State Productivity Index Legend	Subsoil rooting ^a	Corn Bu/A	Soybeans Bu/A	Wheat Bu/A	Oats Bu/A ^b	Crop productivity index for optimum management
13A	Bluford silt loam, 0 to 2 percent slopes	12.35	94.0%		FAV	136	44	55	0	101
**8D2	Hickory silt loam, 10 to 18 percent slopes, eroded	0.79	6.0%		FAV	**108	**36	**44	**50	**82
Weighted Average						134.3	43.5	54.3	3	99.9

Table: Optimum Crop Productivity Ratings for Illinois Soil by K.R. Olson and J.M. Lang, Office of Research, ACES, University of Illinois at Champaign-Urbana. Version: 1/2/2012 Amended Table S2 B811

Crop yields and productivity indices for optimum management (B811) are maintained at the following NRES web site: <http://soilproductivity.nres.illinois.edu/>

** Indexes adjusted for slope and erosion according to Bulletin 811 Table S3

^a UNF = unfavorable; FAV = favorable

^b Soils in the southern region were not rated for oats and are shown with a zero "0".

