

EDELSTEIN, IL

W MAIN ST

40

N STATE ROUTE 40

90

90

72

T1

T4

T5

T2

T6

T7

T3

West Hallock

40

40

N HAKES RD

N STATE ROUTE 40

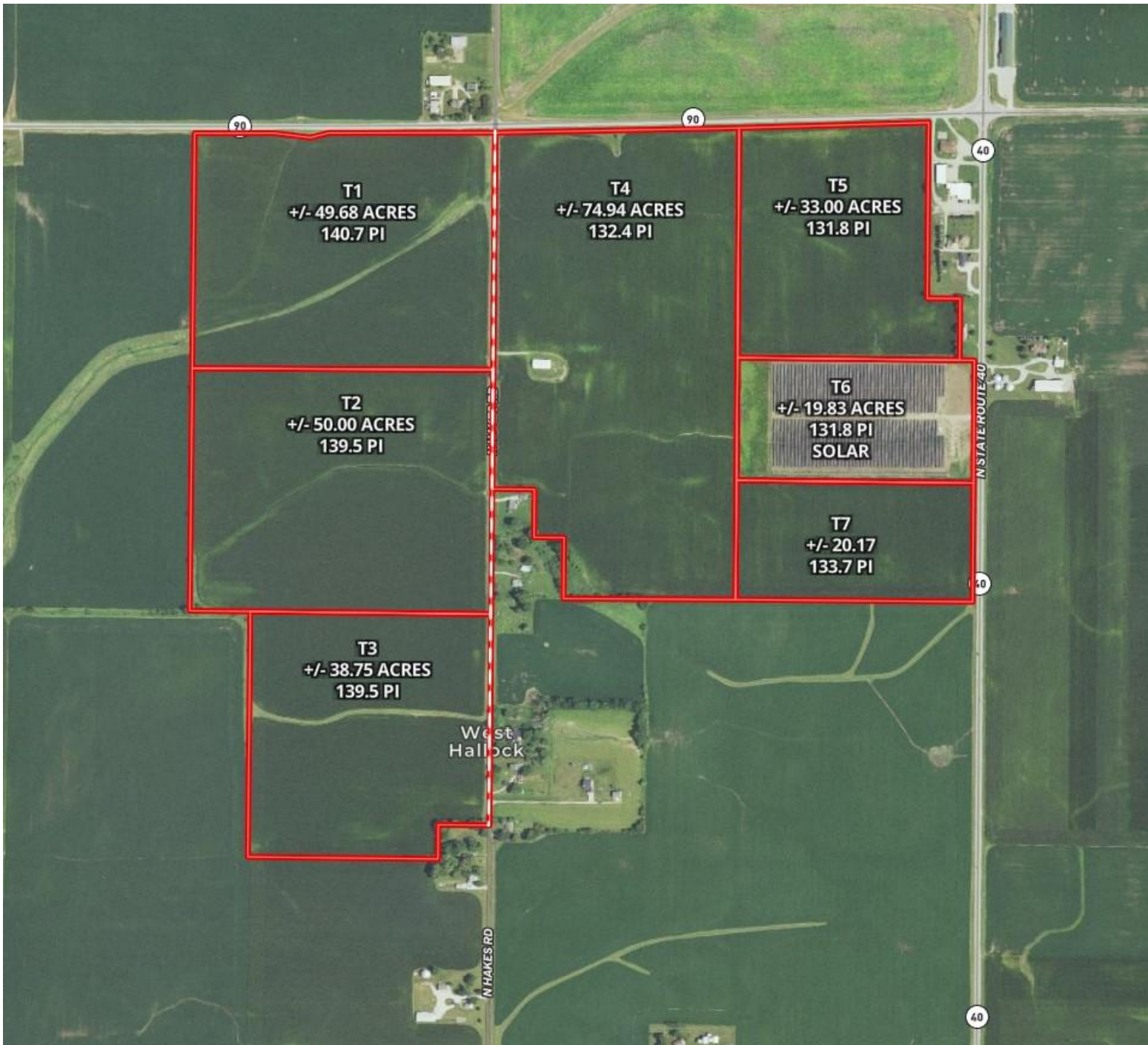
AKRON, IL

W AKRON RD

W AKRON RD

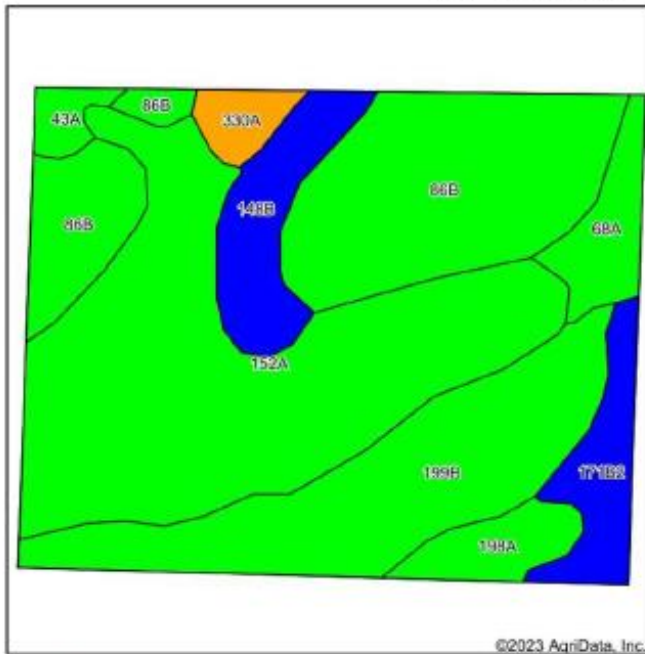
AKRON RD

W HALLOCK HOLLOW RD



Scroll down for SOIL MAPS

T1 Soils Map



State: Illinois
 County: Peoria
 Location: 19-11N-8E
 Township: Hallock
 Acres: 48.75
 Date: 9/29/2023

Ag Exchange
 We know farms. We sell farms.

Maps Provided by
surety
 CUSTOMIZED ONLINE MAPPING
 © AgriData, Inc. 2023 www.AgrData.com



Soils data provided by USDA and NRCS.

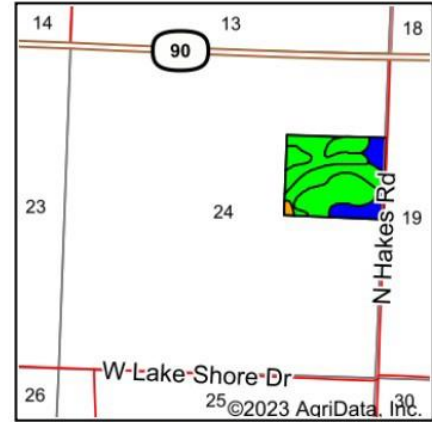
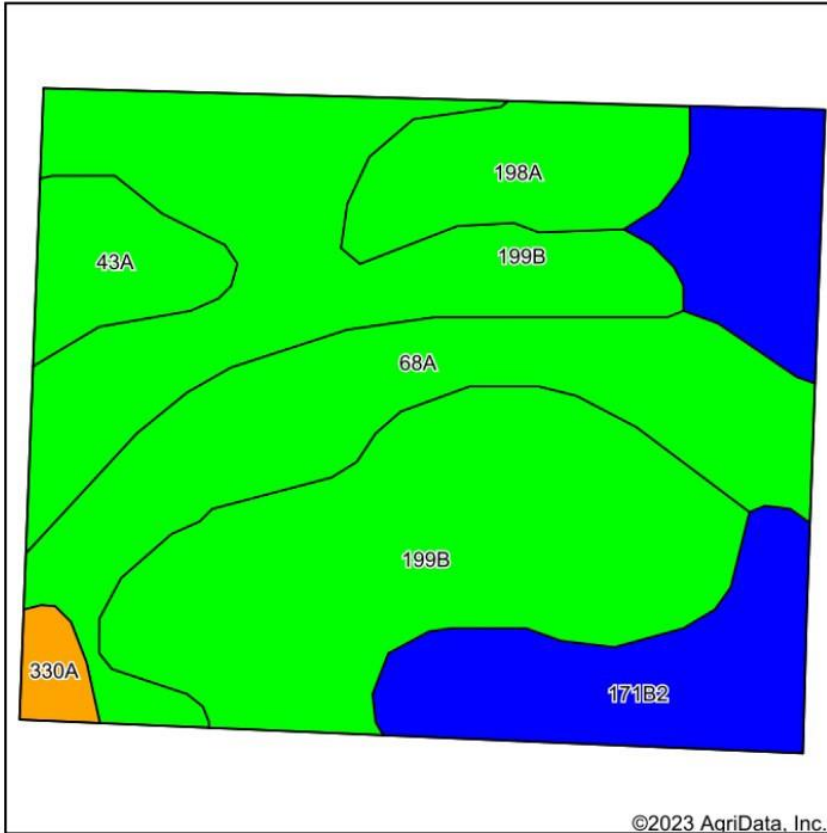
©2023 AgriData, Inc.

Area Symbol: IL143, Soil Area Version: 17

Code	Soil Description	Acres	Percent of field	I. State Productivity Index Legend	Subsoil rooting a	Corn Bu/A	Soybeans Bu/A	Wheat Bu/A	Oats Bu/A b	Sorghum c Bu/A	Alfalfa d hay, T/A	Grass-leg ume e hay, T/A	Crop productivity index for optimum management
152A	Drummer silty clay loam, 0 to 2 percent slopes	17.36	35.6%		FAV	195	63	73	100	0	0.00	5.64	144
**196B	Osco silt loam, 2 to 5 percent slopes	11.71	24.0%		FAV	**189	**59	**74	**101	0	**6.83	0.00	**140
**199B	Pleno silt loam, 2 to 5 percent slopes	9.12	18.7%		FAV	**192	**59	**73	**102	0	**6.85	0.00	**141
**148B	Proctor silt loam, 2 to 5 percent slopes	3.04	6.2%		FAV	**183	**57	**69	**98	0	**6.34	0.00	**134
**171B2	Calvin silt loam, 2 to 5 percent slopes, eroded	2.41	4.0%		FAV	**178	**56	**60	**94	0	**6.43	0.00	**131
86A	Sable silty clay loam, 0 to 2 percent slopes	1.89	3.9%		FAV	192	63	74	99	0	0.00	5.77	143

Code	Soil Description	Acres	Percent of field	II. State Productivity Index Legend	Subsoil rooting a	Corn Bu/A	Soybeans Bu/A	Wheat Bu/A	Oats Bu/A b	Sorghum c Bu/A	Alfalfa d hay, T/A	Grass-leg ume e hay, T/A	Crop productivity index for optimum management	
198A	Elburn silt loam, 0 to 2 percent slopes	1.61	3.3%		FAV	197		61	74	94	0	0.00	5.77	143
330A	Peotone silty clay loam, 0 to 2 percent slopes	0.93	1.9%		FAV	164		55	61	78	0	0.00	5.02	123
43A	Ipava silt loam, 0 to 2 percent slopes	0.68	1.4%		FAV	191		62	77	100	0	0.00	5.90	142
Weighted Average						190.7	60.3	72.7	99.5	-	3.65	2.60	140.7	

T2 Soils Map



State: **Illinois**
 County: **Peoria**
 Location: **19-11N-8E**
 Township: **Hallock**
 Acres: **50**
 Date: **9/29/2023**

Ag Exchange
 We know farms. We sell farms.

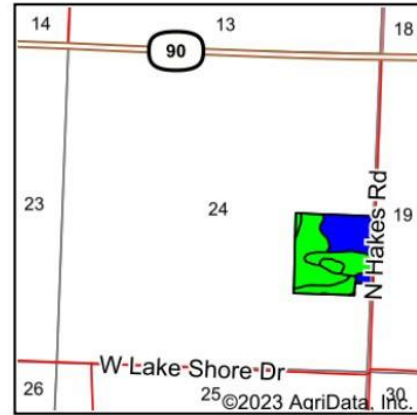
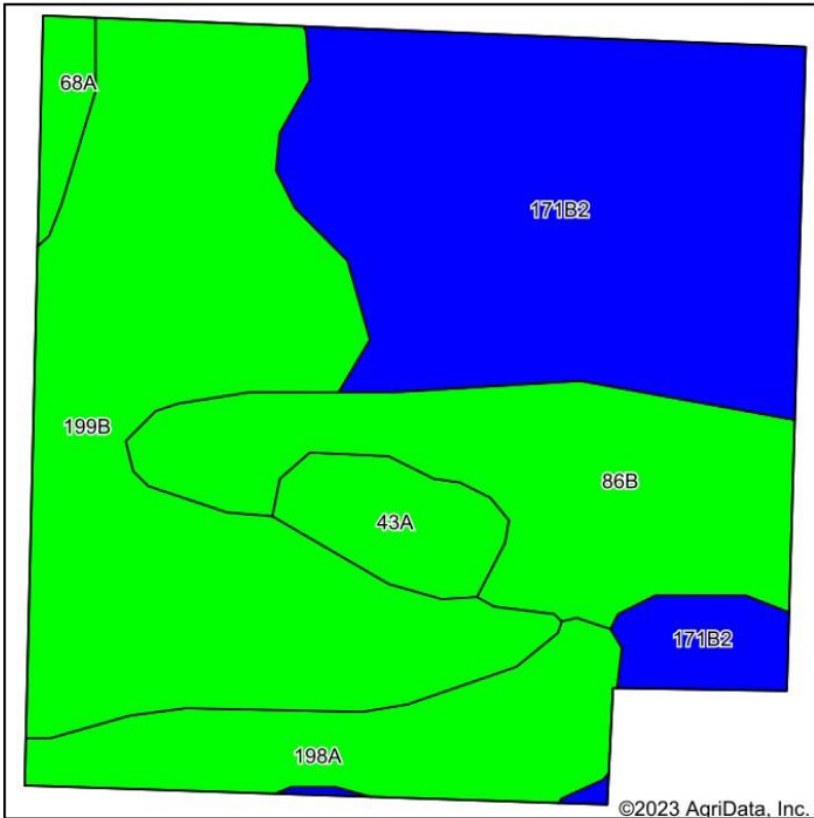


Soils data provided by USDA and NRCS.

Area Symbol: IL143, Soil Area Version: 17

Code	Soil Description	Acres	Percent of field	Il. State Productivity Index Legend	Subsoil rooting a	Corn Bu/A	Soybeans Bu/A	Wheat Bu/A	Oats Bu/A b	Sorghum c Bu/A	Alfalfa d hay, T/A	Grass-legume e hay, T/A	Crop productivity index for optimum management
**199B	Plano silt loam, 2 to 5 percent slopes	24.07	48.1%		FAV	**192	**59	**73	**102	0	**6.95	0.00	**141
68A	Sable silty clay loam, 0 to 2 percent slopes	9.76	19.5%		FAV	192	63	74	99	0	0.00	5.77	143
**171B2	Catlin silt loam, 2 to 5 percent slopes, eroded	9.12	18.2%		FAV	**178	**56	**69	**94	0	**6.43	0.00	**131
198A	Elburn silt loam, 0 to 2 percent slopes	3.92	7.8%		FAV	197	61	74	94	0	0.00	5.77	143
43A	Ipava silt loam, 0 to 2 percent slopes	2.41	4.8%		FAV	191	62	77	100	0	0.00	5.90	142
330A	Peotone silty clay loam, 0 to 2 percent slopes	0.72	1.4%		FAV	164	55	61	78	0	0.00	5.02	123
Weighted Average						189.4	59.5	72.6	98.9	*-	4.52	1.94	139.5

T3 Soils Map



State: **Illinois**
 County: **Peoria**
 Location: **19-11N-8E**
 Township: **Hallock**
 Acres: **39.38**
 Date: **9/29/2023**

Ag Exchange
 We know farms. We sell farms.

Maps Provided By:

 CUSTOMIZED ONLINE MAPPING
 © AgriData, Inc. 2023 www.AgriDataInc.com

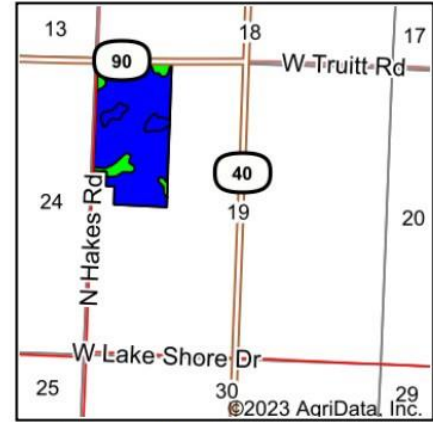
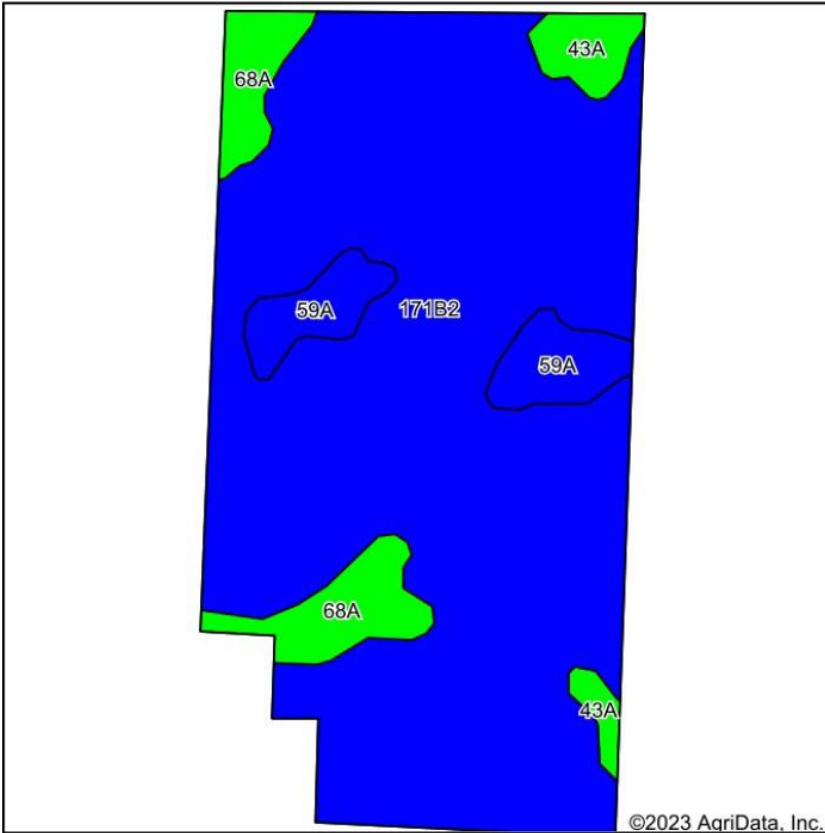


Soils data provided by USDA and NRCS.

Area Symbol: IL143, Soil Area Version: 17

Code	Soil Description	Acres	Percent of field	Il. State Productivity Index Legend	Subsoil rooting ^a	Corn Bu/A	Soybeans Bu/A	Wheat Bu/A	Oats Bu/A ^b	Sorghum ^c Bu/A	Alfalfa ^d hay, T/A	Grass-legume ^e hay, T/A	Crop productivity index for optimum management
**199B	Plano silt loam, 2 to 5 percent slopes	13.45	34.2%		FAV	**192	**59	**73	**102	0	**6.95	0.00	**141
**171B2	Catlin silt loam, 2 to 5 percent slopes, eroded	13.16	33.4%		FAV	**178	**56	**69	**94	0	**6.43	0.00	**131
**86B	Osco silt loam, 2 to 5 percent slopes	6.58	16.7%		FAV	**189	**59	**74	**101	0	**6.83	0.00	**140
198A	Elburn silt loam, 0 to 2 percent slopes	3.96	10.1%		FAV	197	61	74	94	0	0.00	5.77	143
43A	Ipava silt loam, 0 to 2 percent slopes	1.61	4.1%		FAV	191	62	77	100	0	0.00	5.90	142
68A	Sable silty clay loam, 0 to 2 percent slopes	0.62	1.6%		FAV	192	63	74	99	0	0.00	5.77	143
Weighted Average						187.3	58.4	72.1	98.2	*-	5.66	0.91	137.8

T4 Soils Map



State: **Illinois**
 County: **Peoria**
 Location: **24-11N-7E**
 Township: **Hallock**
 Acres: **74.94**
 Date: **9/29/2023**

Ag Exchange
 We know farms. We sell farms.

Maps Provided By:

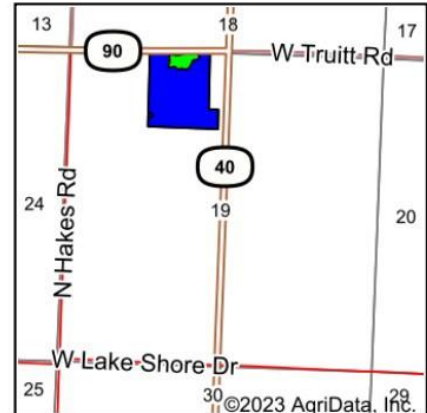
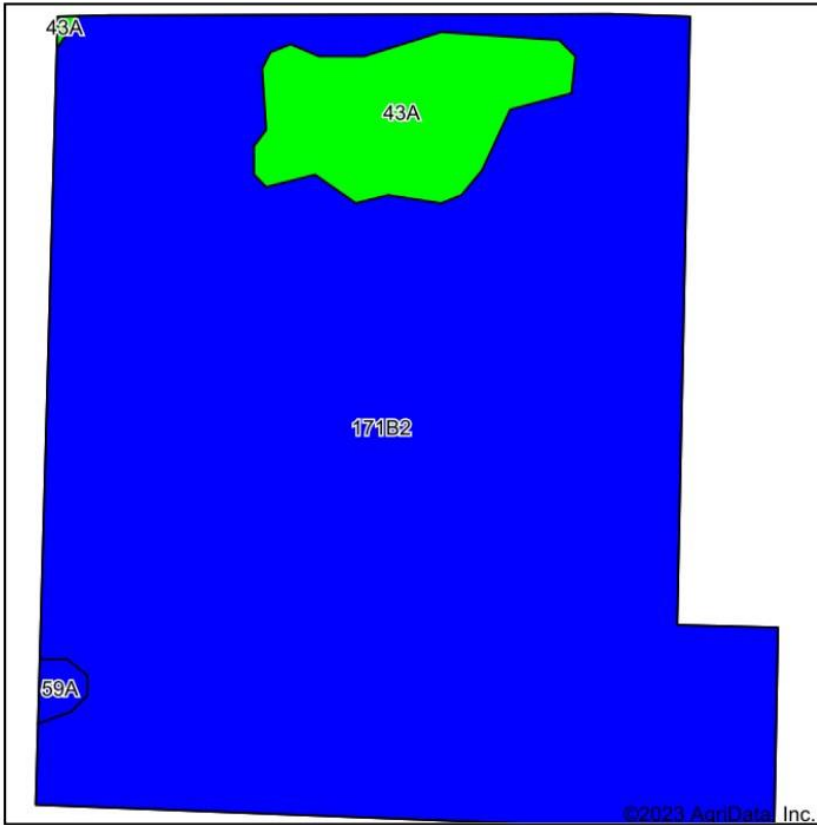
 CUSTOMIZED ONLINE MAPPING
 © AgriData, Inc. 2023 www.AgriDataInc.com



Area Symbol: IL143, Soil Area Version: 17

Code	Soil Description	Acres	Percent of field	Il. State Productivity Index Legend	Subsoil rooting a	Corn Bu/A	Soybeans Bu/A	Wheat Bu/A	Oats Bu/A b	Sorghum c Bu/A	Alfalfa d hay, T/A	Grass-leg e ume hay, T/A	Crop productivity index for optimum management
**171B2	Catlin silt loam, 2 to 5 percent slopes, eroded	63.26	84.4%		FAV	**178	**56	**69	**94	0	**6.43	0.00	**131
68A	Sable silty clay loam, 0 to 2 percent slopes	5.05	6.7%		FAV	192	63	74	99	0	0.00	5.77	143
59A	Lisbon silt loam, 0 to 2 percent slopes	4.35	5.8%		FAV	188	59	74	104	0	0.00	5.64	136
43A	Ipava silt loam, 0 to 2 percent slopes	2.28	3.0%		FAV	191	62	77	100	0	0.00	5.90	142
Weighted Average						179.9	56.8	69.9	95.1	*-	5.43	0.90	132.4

T5 Soils Map



State: **Illinois**
 County: **Peoria**
 Location: **19-11N-8E**
 Township: **Hallock**
 Acres: **31.66**
 Date: **9/29/2023**


 We know farms. We sell farms.
 Maps Provided By:

 CUSTOMIZED ONLINE MAPPING
 © AgriData, Inc. 2023 www.AgriDataInc.com

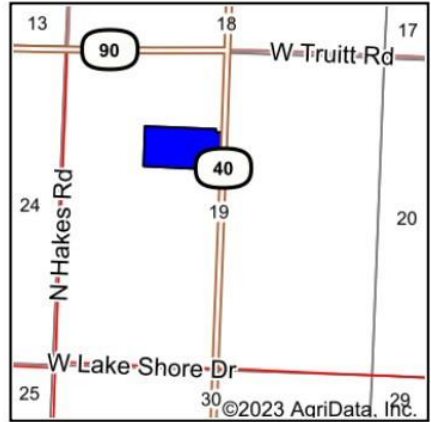
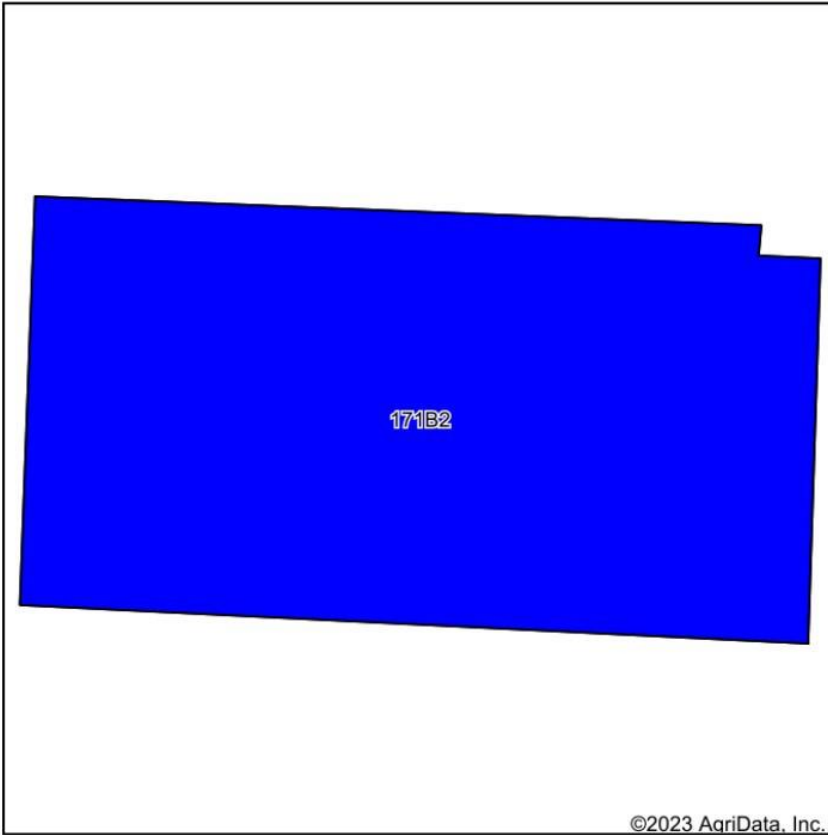


Soils data provided by USDA and NRCS.

Area Symbol: IL143, Soil Area Version: 17

Code	Soil Description	Acres	Percent of field	Il. State Productivity Index Legend	Subsoil rooting ^a	Corn Bu/A	Soybeans Bu/A	Wheat Bu/A	Oats Bu/A ^b	Sorghum ^c Bu/A	Alfalfa ^d hay, T/A	Grass-leg ume ^e hay, T/A	Crop productivity index for optimum management
**171B2	Catlin silt loam, 2 to 5 percent slopes, eroded	29.18	92.2%		FAV	**178	**56	**69	**94	0	**6.43	0.00	**131
43A	Ipava silt loam, 0 to 2 percent slopes	2.33	7.4%		FAV	191	62	77	100	0	0.00	5.90	142
59A	Lisbon silt loam, 0 to 2 percent slopes	0.15	0.5%		FAV	188	59	74	104	0	0.00	5.64	136
Weighted Average						179	56.5	69.6	94.5	*-	5.93	0.46	131.8

T6 Soils Map



State: **Illinois**
 County: **Peoria**
 Location: **19-11N-8E**
 Township: **Hallock**
 Acres: **20**
 Date: **9/29/2023**


Ag Exchange
 We know farms. We sell farms.

Maps Provided By:

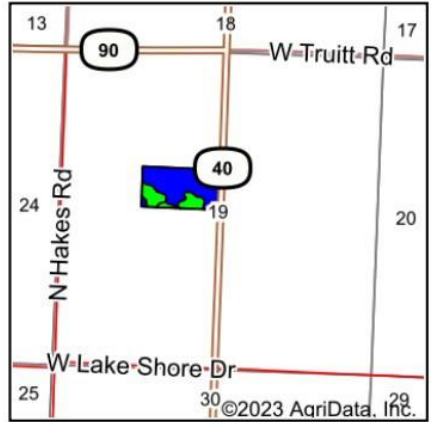
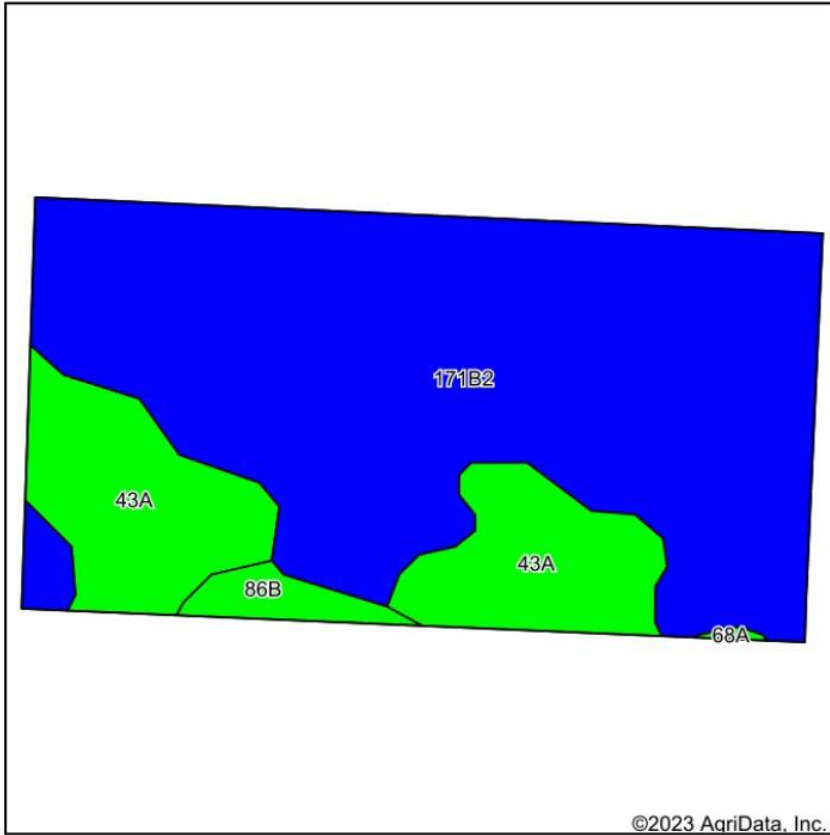
 © AgriData, Inc. 2023 www.AgriDataInc.com



Area Symbol: IL143, Soil Area Version: 17

Code	Soil Description	Acres	Percent of field	Il. State Productivity Index Legend	Subsoil rooting a	Corn Bu/A	Soybeans Bu/A	Wheat Bu/A	Oats Bu/A b	Sorghum c Bu/A	Alfalfa d hay, T/A	Grass-legume e hay, T/A	Crop productivity index for optimum management
**171B2	Catlin silt loam, 2 to 5 percent slopes, eroded	20.00	100.0%		FAV	**178	**56	**69	**94	0	**6.43	0.00	**131
Weighted Average						178	56	69	94	*-	6.43	0.00	131

T7 Soils Map



State: **Illinois**
 County: **Peoria**
 Location: **19-11N-8E**
 Township: **Hallock**
 Acres: **19.94**
 Date: **9/29/2023**


Ag Exchange
 We know farms. We sell farms.

Maps Provided By:

 CUSTOMIZED ONLINE MAPPING
 © AgriData, Inc. 2023 www.AgriDataInc.com



Soils data provided by USDA and NRCS.

Area Symbol: IL143, Soil Area Version: 17

Code	Soil Description	Acres	Percent of field	Il. State Productivity Index Legend	Subsoil rooting a	Corn Bu/A	Soybeans Bu/A	Wheat Bu/A	Oats Bu/A b	Sorghum c Bu/A	Alfalfa d hay, T/A	Grass-legume e hay, T/A	Crop productivity index for optimum management
**171B2	Catlin silt loam, 2 to 5 percent slopes, eroded	14.99	75.2%		FAV	**178	**56	**69	**94	0	**6.43	0.00	**131
43A	Ipava silt loam, 0 to 2 percent slopes	4.45	22.3%		FAV	191	62	77	100	0	0.00	5.90	142
**86B	Osco silt loam, 2 to 5 percent slopes	0.50	2.5%		FAV	**189	**59	**74	**101	0	**6.83	0.00	**140
Weighted Average						181.2	57.4	70.9	95.5	0	5.01	1.32	133.7